

# MDP201

## Conventional duct mounting probe



The duct mounting probe unit is designed for use with the Eaton range of addressable and conventional optical smoke sensors / detectors.

The presence of smoke in a ventilation duct is detected by sampling the airflow through the duct via two sampling tubes. A detector and base are mounted within the sampling chamber, which is located on the external skin of the duct, with sample and exhaust probes passing into the duct in an area of low turbulence. The unit requires an analogue optical sensor or conventional optical detector and corresponding base and is supplied with full fixing instructions.

### Features

Code	MDP201
Duct width range	300mm to 1500mm
Duct air speed range	1m/s to 20m/s
Temperature range	-20°C or +60°C



Duct probe unit shown with optical detector - detector and base must be ordered separately.

# Specifier's guide

## 4.3 Accessories

### Selecting location

To avoid excessive turbulence, the duct probe should be placed in a straight section of duct at a distance from any bends of least three duct widths. If the duct has several extraction points that combine into one duct the duct probe sensitivity will be reduced, it is recommended therefore, that each duct is fitted with its own duct probe.

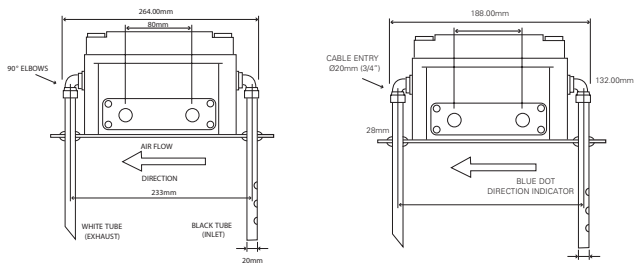
### Testing

A small hole fitted with a plug is on the exhaust side of the duct probe so that smoke can be used to check the detector is operational without removing the lid. ENSURE THE PLUG IS REFITTED AFTER TESTING.

### Servicing

The duct probe should be checked regularly to ensure there is no build-up of dirt. If dirt etc has accumulated in the sampling unit then the detector should be removed from the duct probe and the tubes, elbows etc, cleaned.

### Installation diagrams



### Catalogue numbers

Description	Code
Duct mounting probe	MDP201
5 in 1 multi-mode sensor	FXN922
Optical smoke sensor	FXN533
Photo/thermal sensor	FXN632
Rate of rise heat detector	FXN525
Fixed heat detector 77 °C	FXN524
Fixed heat detector 92 °C	FXN526
Standard base	FXN520
Relay base	FXN520R